



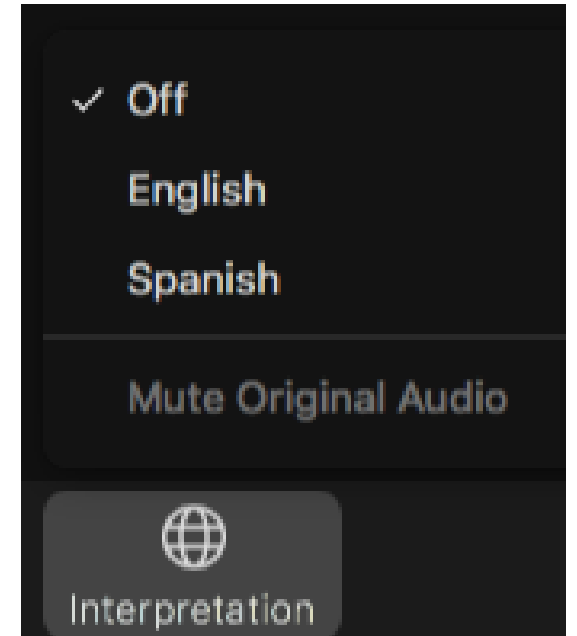
Railroad Avenue Bridges Replacement Project

Public Meeting – Virtual
(Reunión Pública – Virtual)
July 12, 2023

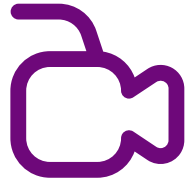
Welcome and We Will Begin Momentarily!
(Bienvenidos y Comenzaremos Momentáneamente!)

How to Select your Language

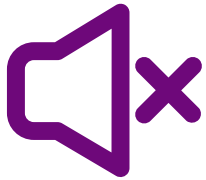
- Spanish translation is available. Click the globe “Interpretation” icon on the Zoom screen
Traducción simultánea al español está disponible. Haga clic en el icono "Interpretation" del globo terráqueo en la pantalla Zoom
- Spanish version of today’s presentation will be posted in the “Chat”...
La presentación en español de hoy se publicará en el "Chat"
- To use closed captioning (in English), select the “CC” on your Zoom screen



Meeting Housekeeping



All participants are muted to ensure sound quality



The Meeting is being recorded

- Presentation slides will be posted following the meeting at: <https://rcprojects.org/railroadbridges>



Spanish interpretation is available

Additional Meeting Housekeeping

- Webcams will **remain off** during the entire presentation.
- Mics will **remain off** and turned on when your name or last 4 phone digits are announced during the verbal comment session.
- Written comments may be submitted by clicking the “**Q&A**” icon. The chat feature will not be accepting comments or questions.
- Comments will be considered in the Final IS/MND
- For technical support, please call **909-200-8587**.

Presentation Agenda

- Opening Remarks
- Project Team/Presentation Panelists
- Purpose of this Meeting
- Project Overview
- Proposed Project
- Environmental Process and Timeline
- Environmental Factors Potentially Affected
- Next Steps
- Public Comment
- Closing Remarks

Key Project Team



County of Riverside Transportation Department



California Department of Transportation, District 8



CNS Engineers (Engineering Consultant)



WSP (Environmental Consultant)

Presentation Panelists



Reed Alvarado
WSP
Meeting Facilitator



Nicholas Robles
WSP
Spanish Interpreter



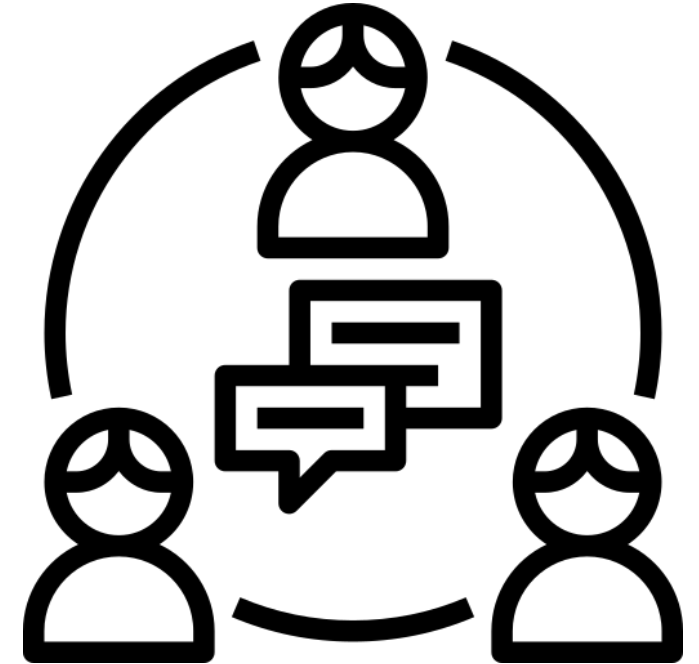
Steve Hosford
CNS
Civil Engineer



Theresa Dickerson
WSP
Environmental Planner

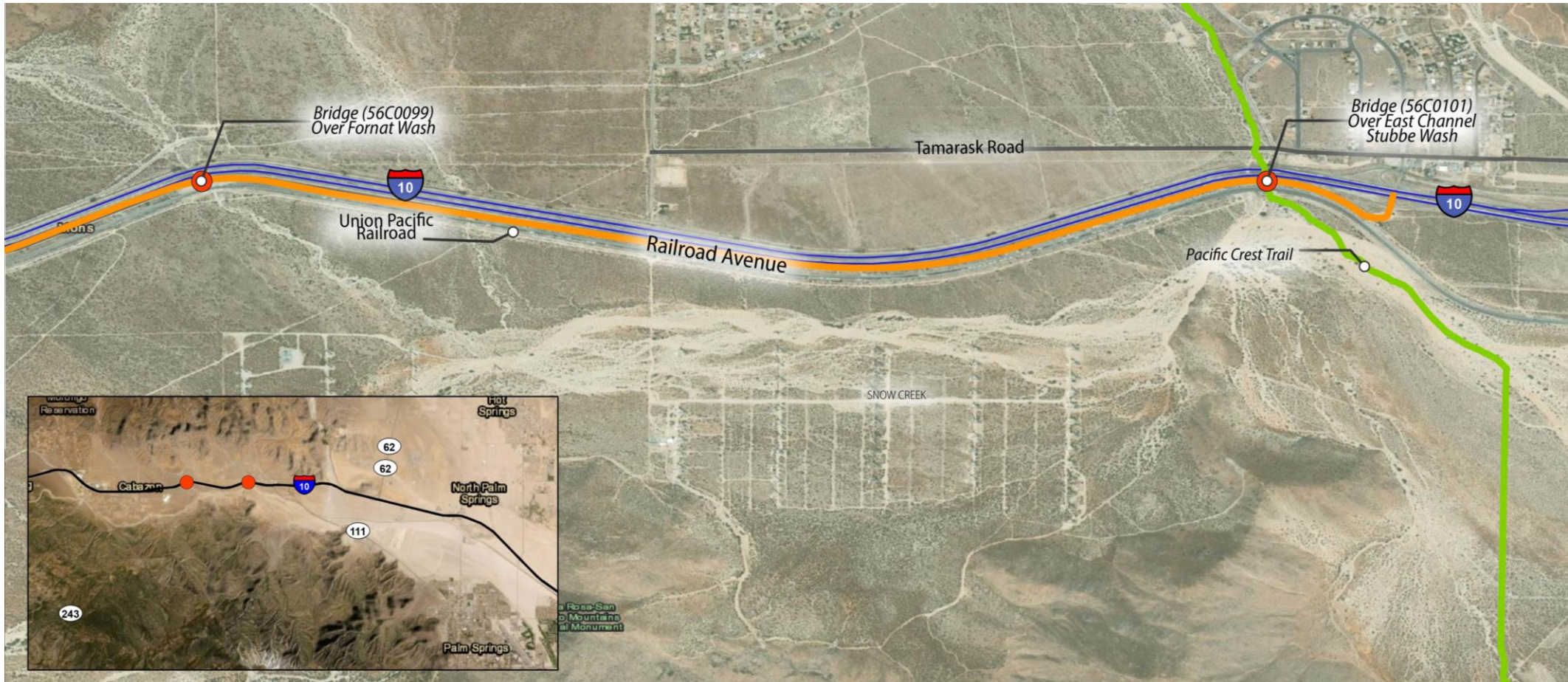
Purpose of Tonight's Meeting

- To inform the public of the proposed Project
- To describe the environmental review process and the next steps
- To provide a forum for public comment on the proposed Project



Project Overview and Area Map

The County of Riverside, in cooperation with Caltrans, proposes to replace two (2) structurally deficient timber bridges along Railroad Avenue



Existing Conditions of Bridge over Fornat Wash



Existing Conditions of Bridge over E. Channel Stubbe Wash



Project Objectives

Upgrade the Fornat Wash Bridge and Stubbe Wash Bridge to meet current design standards and modern load-carrying capacity.

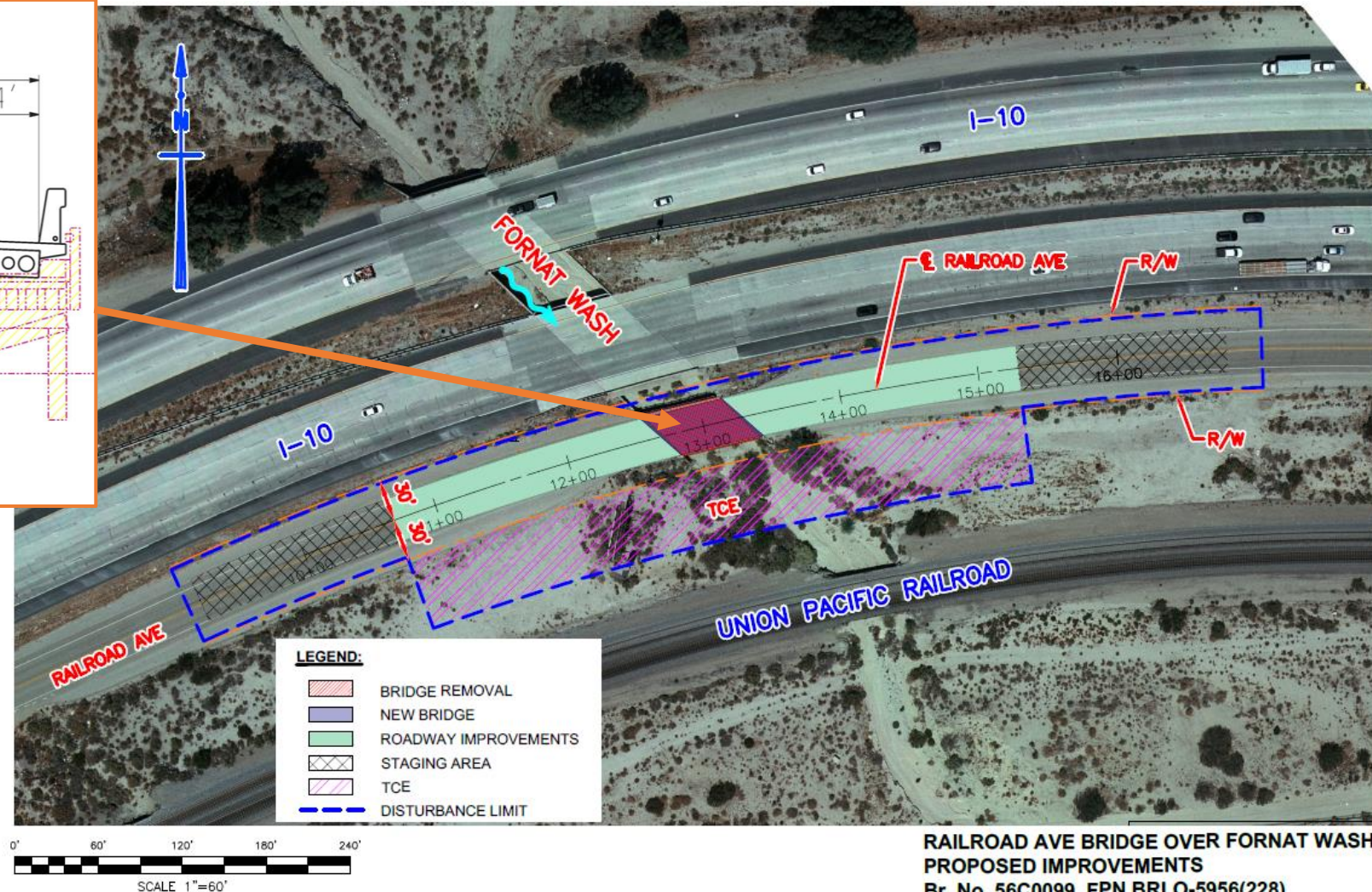
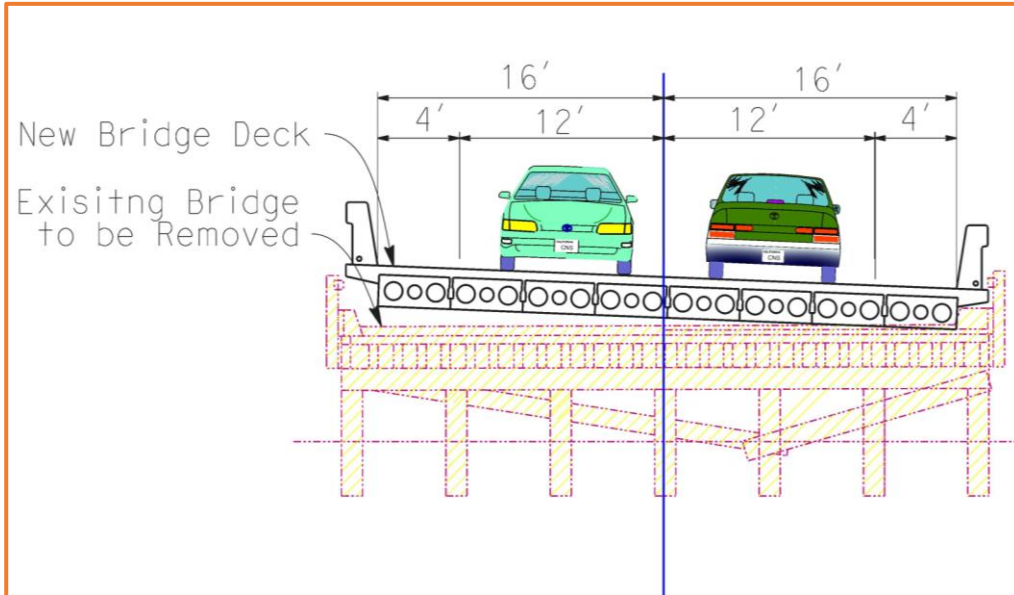
Maintain Railroad Avenue as a local access road.

Ensure Railroad Avenue can be used as a viable emergency route for detoured freeway traffic.

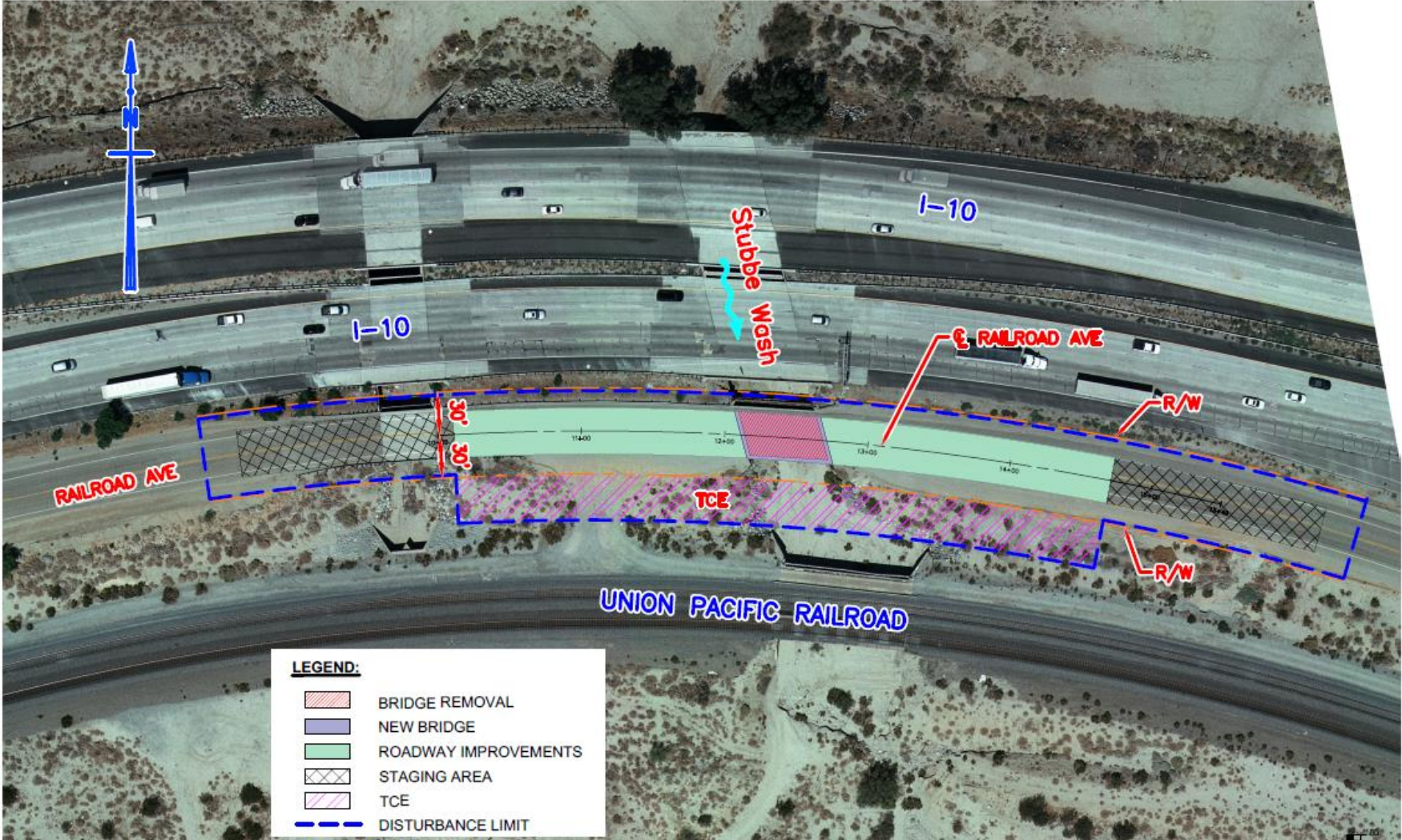
Proposed Project

- Replace two existing structurally deficient timber bridges with new concrete bridges.
- Maintain same bridge length (approx. 60 feet) and width (32 feet curb-to-curb).
- Upgrade the bridges to meet Caltrans current safety design standards.
- Maintain same bridge location and similar height.
- Add channel improvements to address scour issues while maintaining the earthen character.

Proposed Improvements – Bridge Over Fornat Wash



Proposed Improvements – Bridge Over E. Channel Stubbe Wash



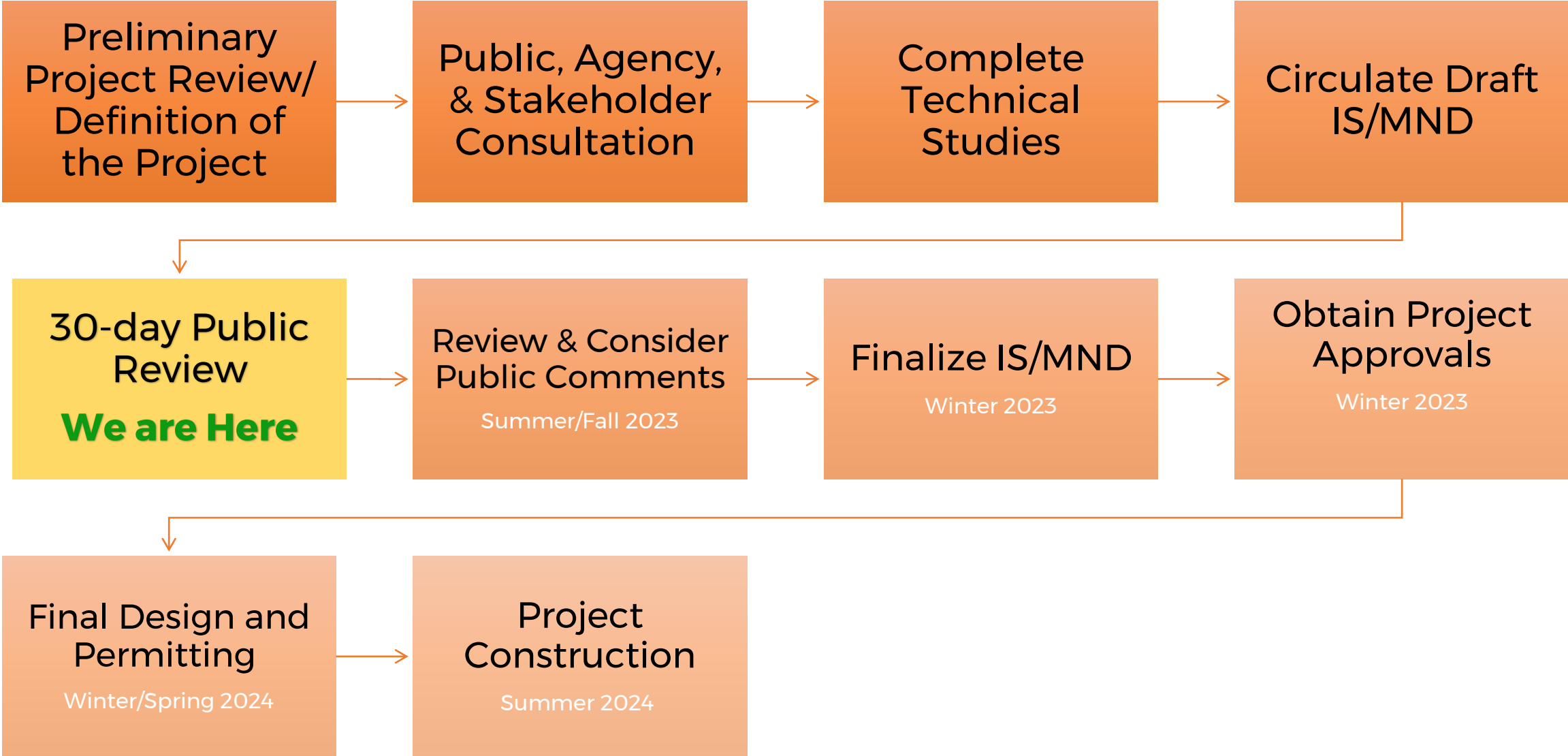
**RAILROAD AVE BRIDGE OVER E. CHANNEL STUBBE WASH
PROPOSED IMPROVEMENTS
Br. No. 56C0101, FPN BRLO-5956(229)**

Additional Project Info

- Construction duration - about 18 months
- Railroad Avenue closed during construction
- Pacific Crest Trail closures



Project Schedule





Technical Studies

- Biological Resources
- Cultural Resources
- Hazardous Materials/Waste
- Hydrology and Water Quality
- Paleontological Resources
- Parks and Recreational Facilities
- Traffic
- Visual/Aesthetics
- Air Quality

IS/MND Contents

- 1 Introduction
- 2 Project Setting and Description
- 3 Initial Study Checklist and Analysis
- 4 References
- 5 List of Preparers
- 6 List of Technical Studies
- 7 Appendix A - Mitigation Monitoring and Reporting Plan
- 8 Appendix B - Assembly Bill (AB) 52 Consultation Log

CEQA Impact Definition

- **No Impact:** No impact identified
- **Less than Significant Impact:** Impact that does not exceed the CEQA-defined threshold of significance
- **Less than Significant Impact with Mitigation Incorporated:** Impacts that have been reduced from “potentially significant” to “less than significant” with the incorporation of avoidance, minimization, and/or mitigation measures.
- **Significant Impact:** A significant and unavoidable impact.

Environmental Factors Potentially Effectuated

No Impact	Less Than Significant Impact	Less than Significant Impact with Mitigation Incorporated	Significant Impacts
<ul style="list-style-type: none">• Agricultural and Forest Resources• Land Use• Mineral Resources• Population and Housing• Public Services	<ul style="list-style-type: none">• Aesthetics• Air Quality• Cultural Resources• Energy• Geology and Soils• Hazards and Hazardous Materials• Water Quality• Noise• Recreation• Transportation• Tribal Cultural Resources• Utilities• Wildfire	<ul style="list-style-type: none">• Biological Resources	<ul style="list-style-type: none">• None identified



Avoidance Measures

Biological Resources:

- Preconstruction surveys for Desert Tortoises, Burrowing Owl, Bats, and Nesting Birds
- Worker Environmental Awareness Program Training

Cultural Resources:

- Procedures for potentially discovered cultural resources

Hazards and Hazardous Materials:

- Preconstruction survey for Hazards and hazardous materials

Traffic:

- Develop and implement a Traffic Management Plan (TMP)

Water Quality:

- Develop and implement a Stormwater Pollution Prevention Plan (SWPPP) and provide employee training

Recreational Facilities:

- Coordinate scheduled closures and detour plans with Agencies

Minimization Measures

Biological Resources:

- Restore all construction areas to preconstruction conditions
- Implement Best Management Practices
- Biological Monitor

Visual Impacts:

- Implement BMPs to reduce impacts on the visual environment
- Provide aesthetic treatments to the E. Channel Stubbe Wash Bridge

Paleo:

- Preparation of a PRIMP
- Pre-Construction Paleontology Survey

Water Quality:

- Litter control
- Slope and channel protection
- Minimize impervious areas

Air Quality/GHG Emissions:

- Control excessive dust
- Maintain equipment engines
- Prevent material from spilling onto streets

Recreational facilities:

- Post detour signage
- Provide alternative trail route
- Establish warning mechanisms
- Restore damage to trail post-construction

Utilities:

- Coordinate with local utility providers prior to construction



Pacific Crest Trail under East Channel Stubbe Wash Bridge

Mitigation Measure

Biological Resources: Compensatory Mitigation for Replacement/Restoration of Jurisdictional Waters



Fornat Wash Bridge

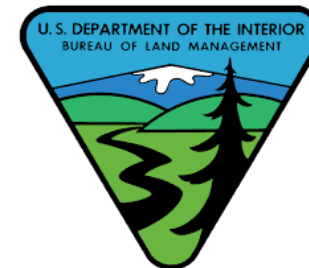


E. Channel Stubbe Wash

Agency Coordination and Tribal Consultation

Agencies:

- United States Department of Fish and Wildlife Service (USFWS)
- United States Department of Agriculture, Forest Service
- Bureau of Land Management (BLM)
- Pacific Crest Trail Association (PCTA)
- State Historic Preservation Officer (SHPO)



Tribes:

- Agua Caliente Band of Cahuilla Indians
- Morongo Band of Mission Indians
- Soboba Band of Luiseno Indians
- Twenty-Nine Palms Band of Mission Indians

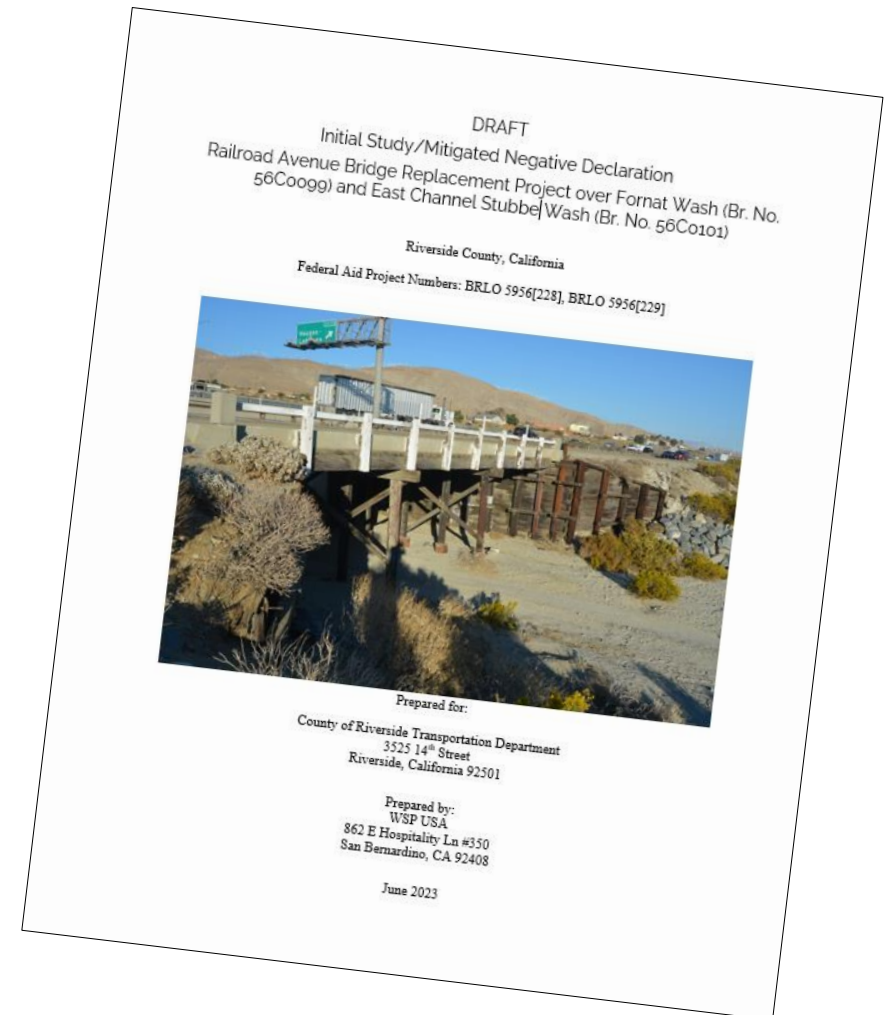


Public Circulation

- The public review period of the Draft Initial Study with Proposed Mitigated Negative Declaration (Draft IS/MND) is from **June 28, 2023**, until **July 27, 2023**.
- All public comments must be submitted to the County by **July 27, 2023**.

Draft IS/MND is Available for Public Review

- Document can be downloaded from:
<https://rcprojects.org/railroadbridges>
- Hard copies are available at:
 - County of Riverside Transportation Department (3525 14th Street, Riverside, CA 92501).
 - Cabazon Public Library (50425 Carmen Avenue, Cabazon, CA 92230).
- Email your questions or comments to:
fsegovia@rivco.org
- Comments will be accepted through **July 27th** and will be considered in the Final Environmental Document.



Where to Submit Public Comments

Mail to:

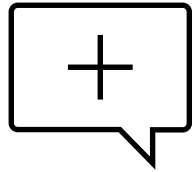
County of Riverside Transportation Department
Attn: Frances Segovia, Senior Transportation Planner
3525 14th Street, Riverside, CA 92501

Email to: fsegovia@rivco.org

Comments due no later than **July 27th, 2023**



Process to Submit Public Comment



- **Written comments:**

- To provide a comment tonight, use the **Q&A** feature on your Zoom screen to submit your written comment

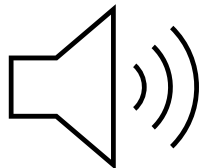


- **Verbal statements:**

- *If you would like to make a statement regarding the project, please do the following:*
 - Zoom app users: **Raise Hand Feature**
 - Call-in users: Dial ***9** to raise your hand

- **When it is your turn to speak:**

- Zoom app users: Your name will be called in the order received and the mic unmuted
- Call-in users: Press ***6** to unmute your mic when you hear your last four phone digits announced
- State your name and provide a comment
- 2 minutes per speaker



The background features a dark blue-grey color with a pattern of stylized hands holding puzzle pieces. The hands are rendered in a lighter shade of blue, and the puzzle pieces are dark grey. The overall composition is centered and symmetrical, with the hands and puzzle pieces arranged in a way that suggests a collaborative effort.

Thank you!

We appreciate your participation!

rcprojects.org/railroadbridges