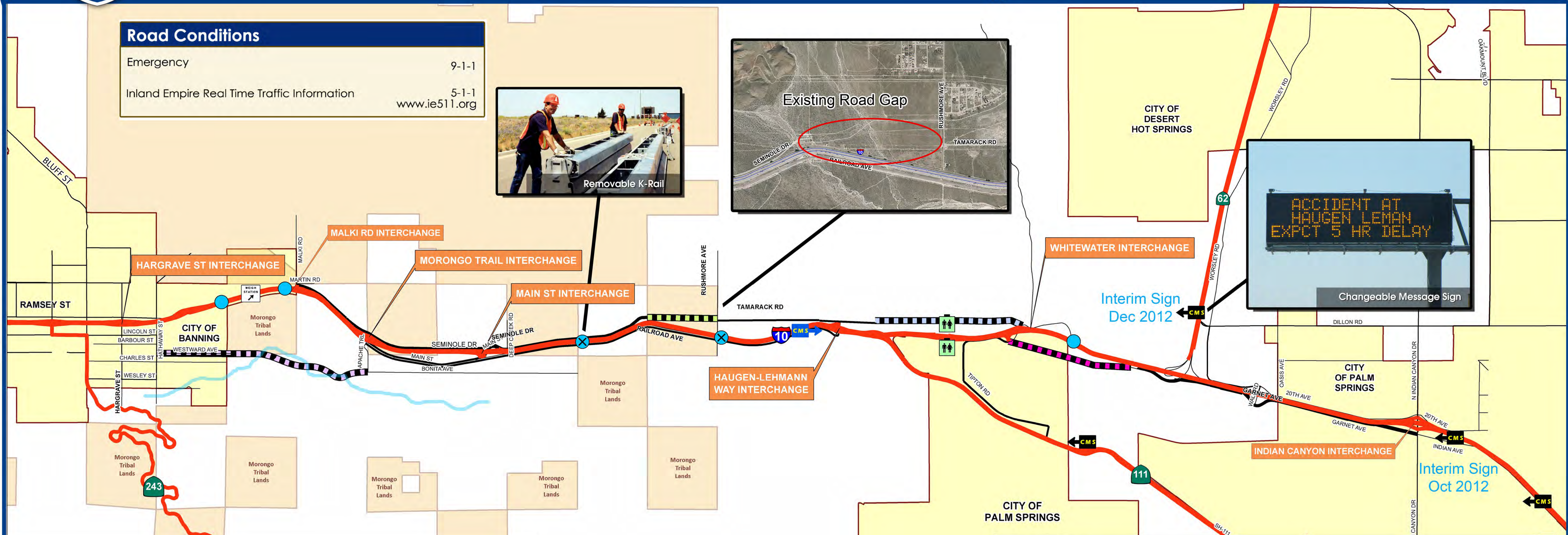
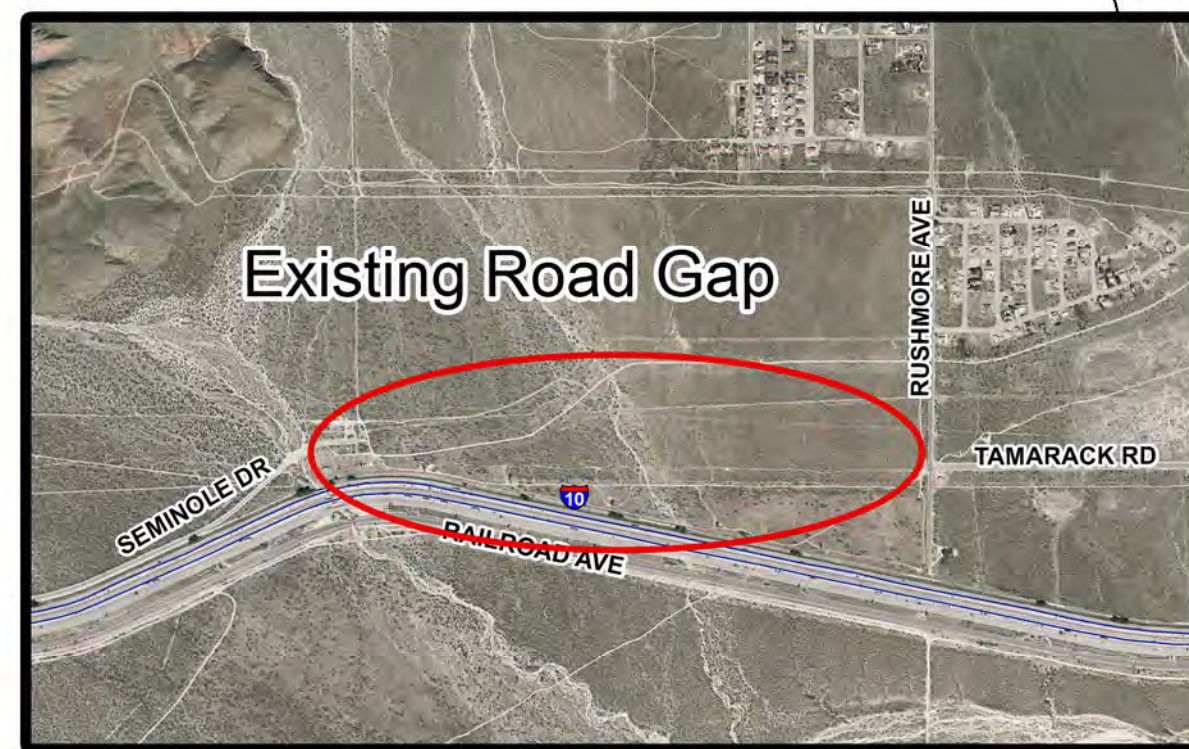




I-10 "Lifeline" EMERGENCY ACTION PLAN

Road Conditions

Emergency	9-1-1
Inland Empire Real Time Traffic Information	5-1-1 www.ie511.org



I-10 "Life Line" Emergency Action Plan

Future Alternative Routes

- GARNET EXTENSION
- I-10 BYPASS (WESTWARD EXTENSION)
- SEMINOLE EXTENSION
- TAMARACK EXTENSION

Legend:

- Proposed Gate Summer 2013
- Existing Removable K-Rail
- Future Changeable Message Sign Mid 2013
- Existing Changeable Message Sign
- Rest Area

Scale: 1 inch = 1 miles

